

# MONTHLY MEMBERSHIP PROGRESS REPORT

District 2 T1

Results as of: 5/31/2026

GMT:

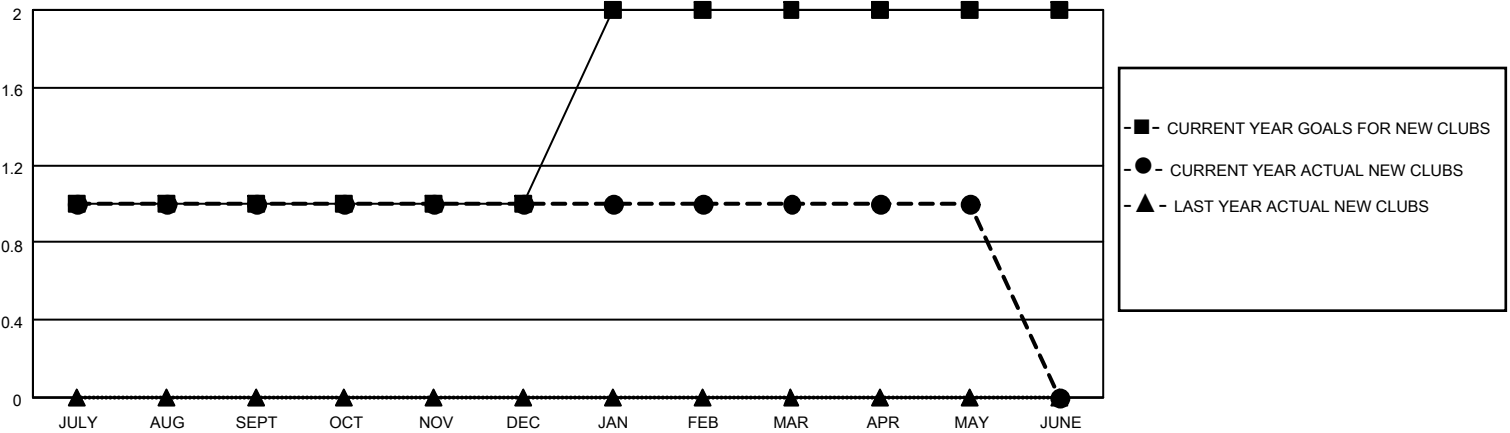
LOCATION TEXAS

GMT CA

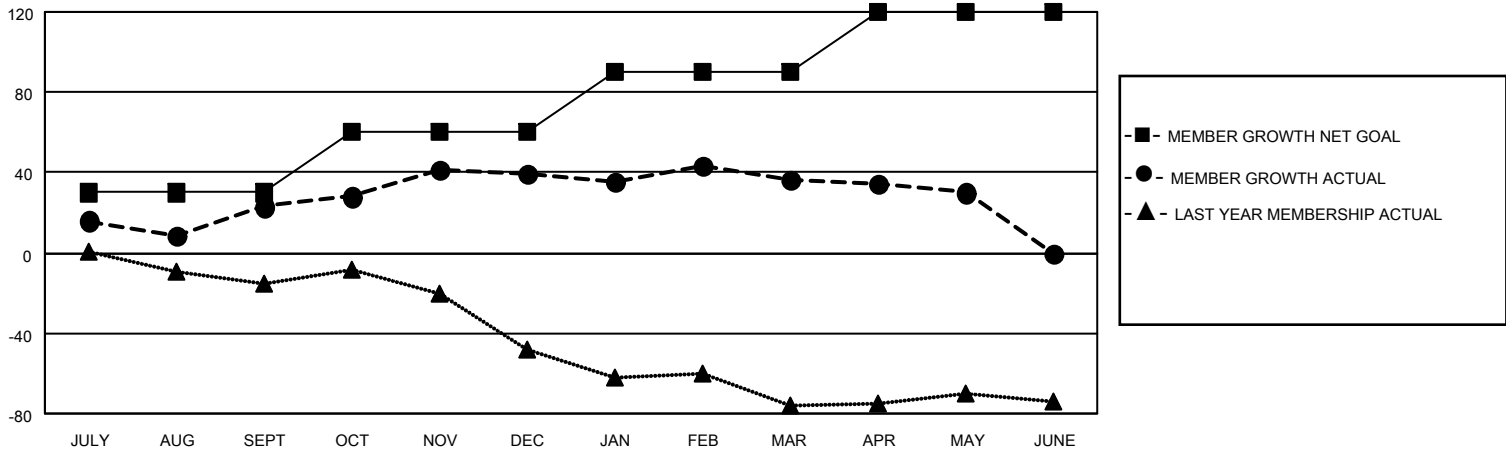
Clubs			
RESULTS FOR 2025-2026			
QUARTER	NEW CLUB GOAL	NEW CLUBS	DROPPED CLUBS
JULY/AUG/SEPT	1	1	0
OCT/NOV/DEC	0	0	0
JAN/FEB/MAR	1	0	0
APR/MAY/JUNE	0	0	0

Members			
RESULTS FOR 2025-2026			
QUARTER	MEMBER GROWTH NET GOAL	MEMBER GROWTH ACTUAL	DROPPED MEMBERS ACTUAL (including transfers)
JULY/AUG/SEPT	30	83	54
OCT/NOV/DEC	30	45	26
JAN/FEB/MAR	30	31	33
APR/MAY/JUNE	30	25	30

GOALS AND ACTUAL NEW CLUBS CUMULATIVE



GOALS AND ACTUAL MEMBERS CUMULATIVE



DROPPED CLUBS: 0

19 CLUBS OF 35 ADDED 1 OR MORE NEW MEMBERS

GENDER DISTRIBUTION

MALE 709 (58.94%)  
FEMALE 494 (41.06%)

DROPPED MEMBERS

[CLICK HERE FOR CUMULATIVE MEMBERSHIP DATA](#)

DECEASED	14
CLUB CANCELLED	0
OTHER	129
<b>TOTAL</b>	<b>143</b>

TOTAL FAMILY UNIT MEMBERS	138
FAMILY MEMBERS PAYING HALF DUES	69